



# K. SEAL & ASSOCIATES

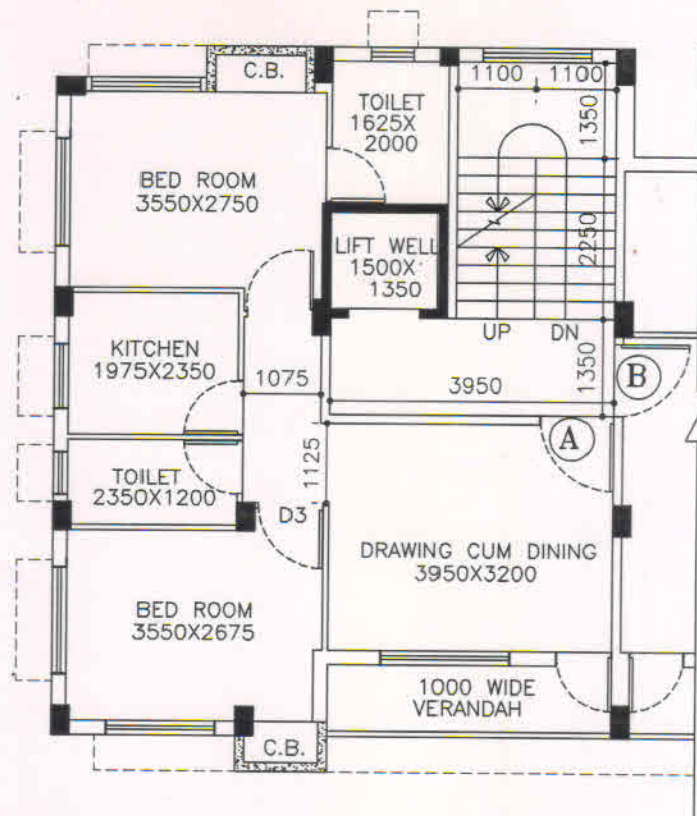
22A, Raja Naba Krishna Street, Kolkata - 700 005  
 (Near Jaipuria College)

Ref. No. ....

Date .....

AREA STATEMENT PLAN OF FLAT NO.- 2A, 3A & 4A OF GROUND + FOUR STORIED RESIDENTIAL BUILDING AT PREMISES NO:- 2/1A, SIBDAS BHADURI STREET, KOLKATA-700004, IN WARD:-11, BOROUGH-II, P.S.- SHYAMPUKUR. WITHIN THE KOLKATA MUNICIPAL CORPORATION.

AREA STATEMENT			
MKD.	CARPET AREA (SFT.)	BALCONY AREA (SFT.)	C.B. AREA (SFT.)
2A, 3A & 4A	498 SFT.	41 SFT.	14 SFT.



SHIBDAS BHADURI STREET For K. SEAL & ASSOCIATES  
 ( K. M. C. ROAD )

*Kamlesh Seal*  
 Proprietor

SECOND, THIRD & FOURTH FLOOR PLAN OF FLAT NO.-2A, 3A & 4A



**KAMALESH SEAL, B. Tech (Civil)**  
 L.B.S. No. :- 1020 (Class-I)  
 The Kolkata Municipal Corporation

**ARCHITECTS**

**ENGINEERS**

**CONSULTANTS**